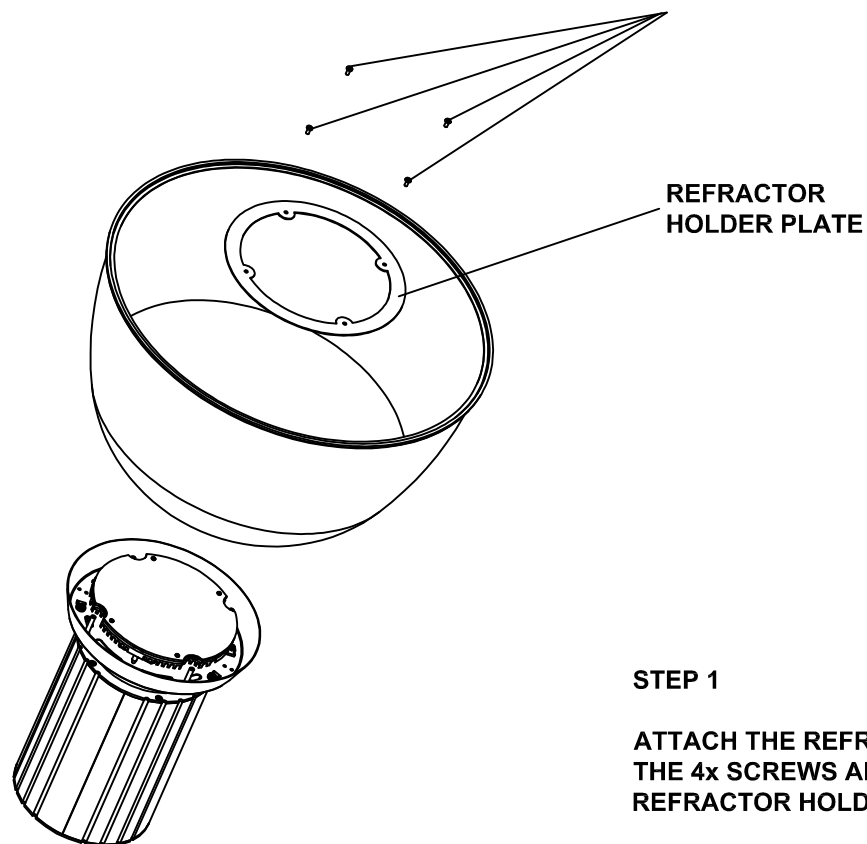


- 1: These instructions may not cover all details or variations. For additional information contact Beta-calco.
- 2: Luminaires must be installed in accordance with national electrical code and local regulation.
- 3: Disconnect the power before installing the fixture or servicing.
- 4: Min 90°C supply conductors.

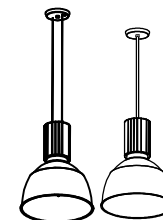
## REFRACTOR SCREWS (4x)



## NOTES:

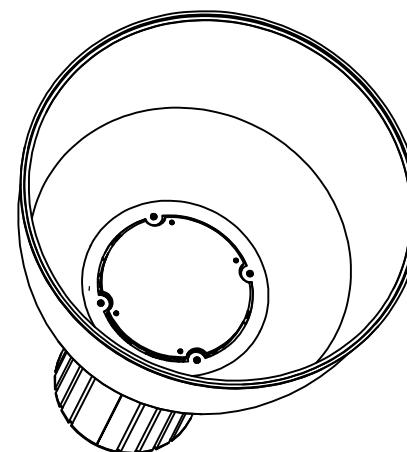
The fixture is shipped partially assembled as follows:

- A. Canopy subassembly
- B. Ballast housing and spinning subassembly
- C. Refractor
- D. Cradle bars (x4) provided with 6-32 set screws (x4) and flat head screws (x8) (cradle bars configuration only) or Spacers assy (ring, spacers x4).
- E. Finials (x4) and decorative disc/ring (cradle bars / spacers configurations only)



## IMPORTANT NOTE FOR FIXTURES WITH LED:

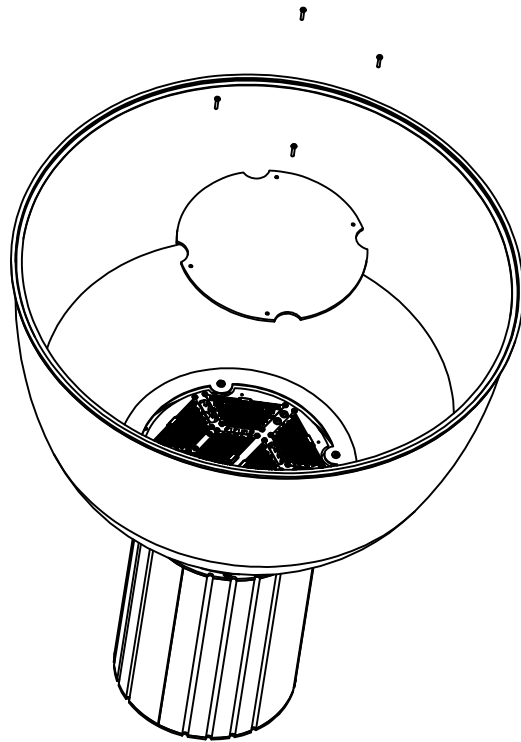
**- DO NOT TOUCH THE LED.**



**NOTE: USE COTTON GLOVES WHEN INSTALLING OR HANDLING FIXTURES WITH PLATED FINISH OR GLASS/FAUX GLASS DECORATIVE COMPONENTS**

FIXTURE DESCRIPTION: BELARO 22 LED REFRACTOR

- 1: These instructions may not cover all details or variations. For additional information contact Beta-calco.
- 2: Luminaires must be installed in accordance with national electrical code and local regulation.
- 3: Disconnect the power before installing the fixture or servicing.
- 4: Min 90°C supply conductors.



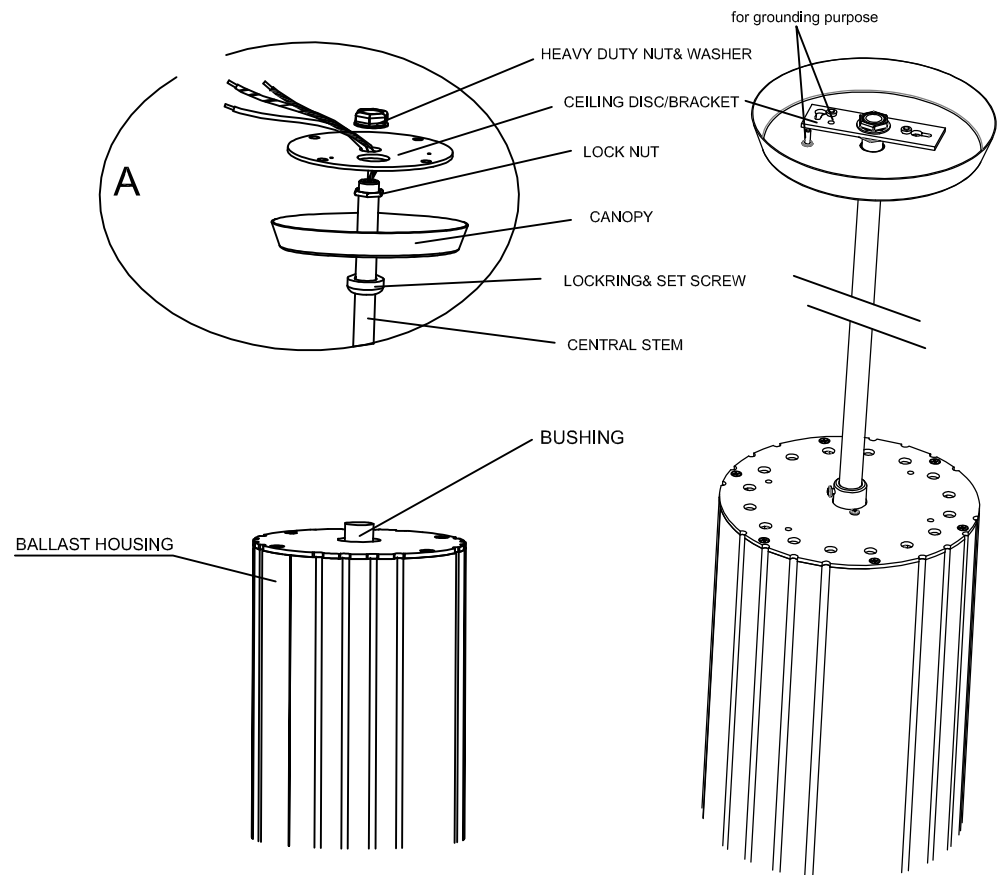
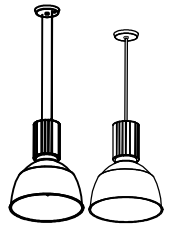
## STEP 2 REMOVE THE BOTTOM WOODEN PROTECTION

**NOTE: USE COTTON GLOVES WHEN INSTALLING OR HANDLING FIXTURES  
WITH PLATED FINISH OR GLASS/FAUX GLASS DECORATIVE COMPONENTS**

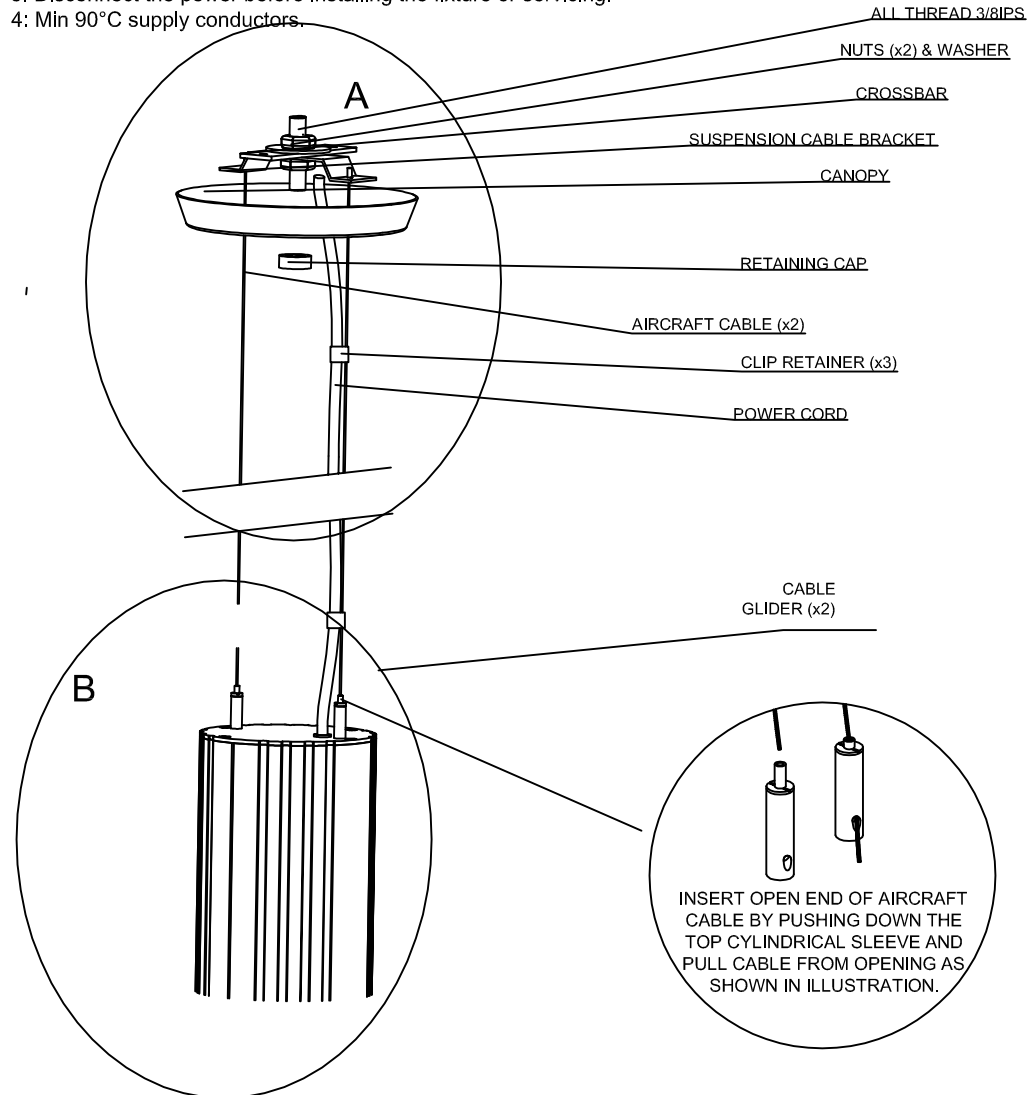
FIXTURE DESCRIPTION: BELARO 22 LED REFRACTOR

## STEP 6 (TUBE SUSPENSIONS)

1. Insert and secure the threaded stem to the bushing located on the top lid. Slide the canopy and lock ring onto the stem.
2. Attach stem to the ceiling disc/bracket.
3. Lift the whole assembly, make the appropriate wire connections and the grounding and secure ceiling disc over/to the junction box.
4. Lift canopy to cover ceiling disc/bracket and secure it with the locking and set screw.

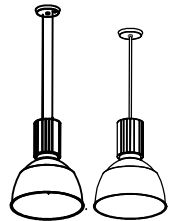


- 1: These instructions may not cover all details or variations. For additional information contact Beta-calco.
- 2: Luminaires must be installed in accordance with national electrical code and local regulation.
- 3: Disconnect the power before installing the fixture or servicing.
- 4: Min 90°C supply conductors.



## STEP 6 (CABLES SUSPENSIONS)

1. Remove crossbar, all thread and suspension cable bracket from canopy and mount them over the junction box.
2. Pass the aircraft cables through the canopy and then secure it to the ceiling using the retaining cap.
3. Insert the open ends of the aircraft cables into the cable gliders by pushing down the top cylindrical sleeves. Pull out the cable from openings to adjust and level the fixture. At this stage the fixture is suspended. Note: The cable can be adjust from 2 feet to 7 feet long.
4. Remove the retaining cap to lower the canopy. Pass the power cord through the canopy grommet, adjust it to the desired length and make wire connections. Raise the canopy and secure it to the ceiling using the retaining cap. Use the clip retainers to hold the power cord onto the aircraft cable.

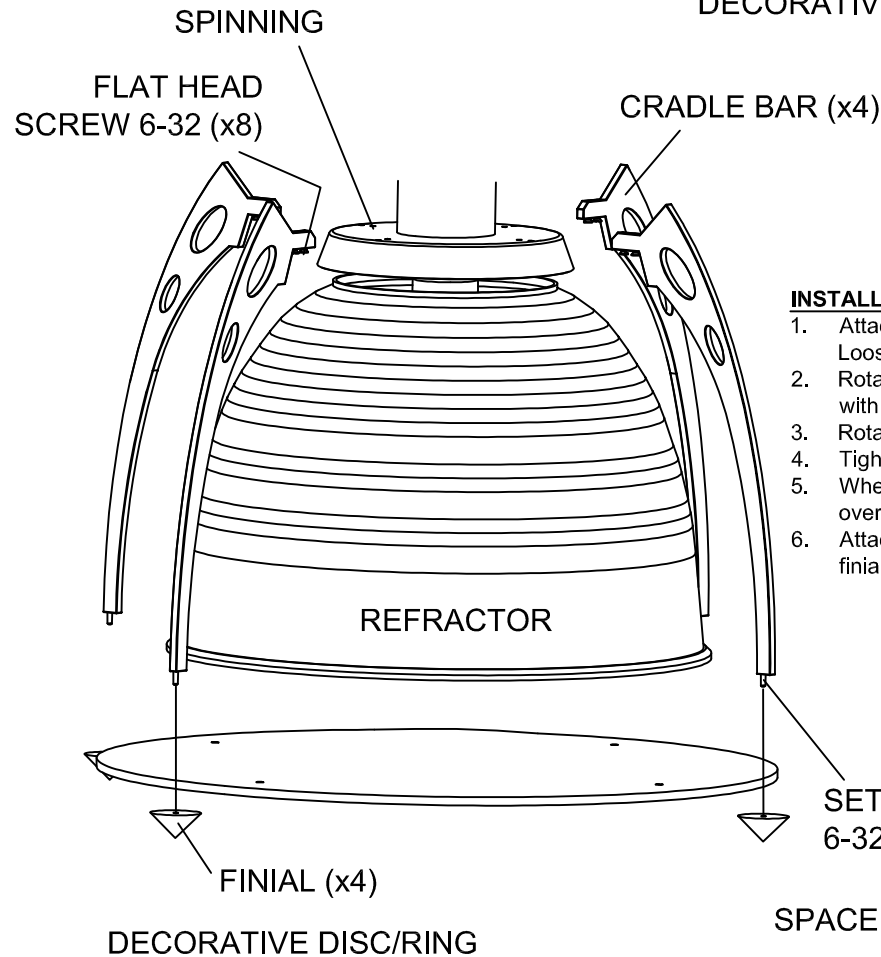


**NOTE: USE COTTON GLOVES WHEN INSTALLING OR HANDLING FIXTURES WITH PLATED FINISH OR GLASS/FAUX GLASS DECORATIVE COMPONENTS**

FIXTURE DESCRIPTION: BELARO 22 LED REFRACTOR

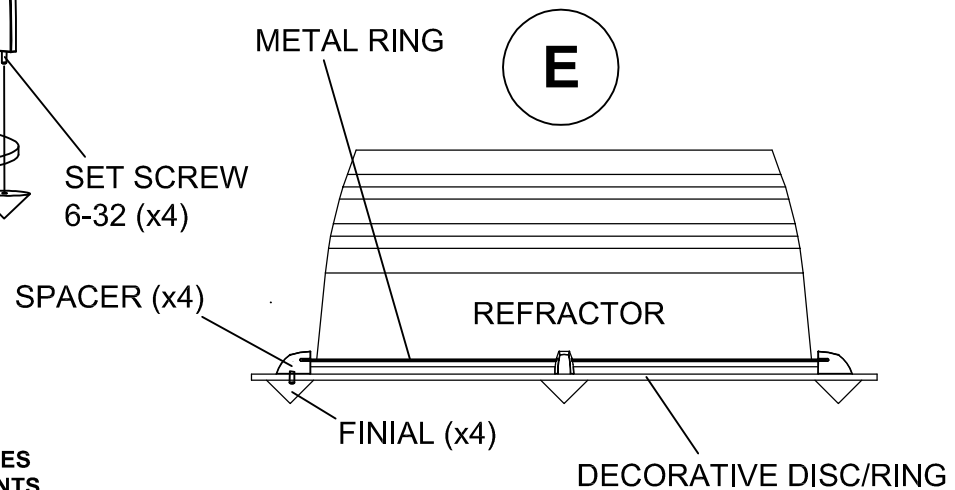
- 1: These instructions may not cover all details or variations. For additional information contact Beta-calco.
- 2: Luminaires must be installed in accordance with national electrical code and local regulation.
- 3: Disconnect the power before installing the fixture or servicing.
- 4: Min 90°C supply conductors.

## DECORATIVE PARTS INSTALLATIONS (OPTIONAL)



### INSTALLATION STEPS:

1. Attach the cradle bars (optional) to the spinning using supplied 6-32 flat head screws. Loosen the 4 screws on Refractor Brackets so that they are able to turn freely.
2. Rotate 4 Refractor Brackets inward until the Refractor is able to go over the lampholders and meet with the spinning.
3. Rotate Refractor Brackets until they prevent the Refractor from moving.
4. Tighten screws on 4 Refractor Brackets.
5. When option (E)-decorative disc/ring is offered, before suspending the fixture, slide the Metal ring over the Refractor.
6. Attach the decorative disc/ring (when provided) to the cradle bars using supplied set screws and finials. Note: Use clean cotton gloves when handling the acrylic or glass decorative disc/ring.



**NOTE: USE COTTON GLOVES WHEN INSTALLING OR HANDLING FIXTURES WITH PLATED FINISH OR GLASS/FAUX GLASS DECORATIVE COMPONENTS**

FIXTURE DESCRIPTION: BELARO 22 LED REFRACTOR